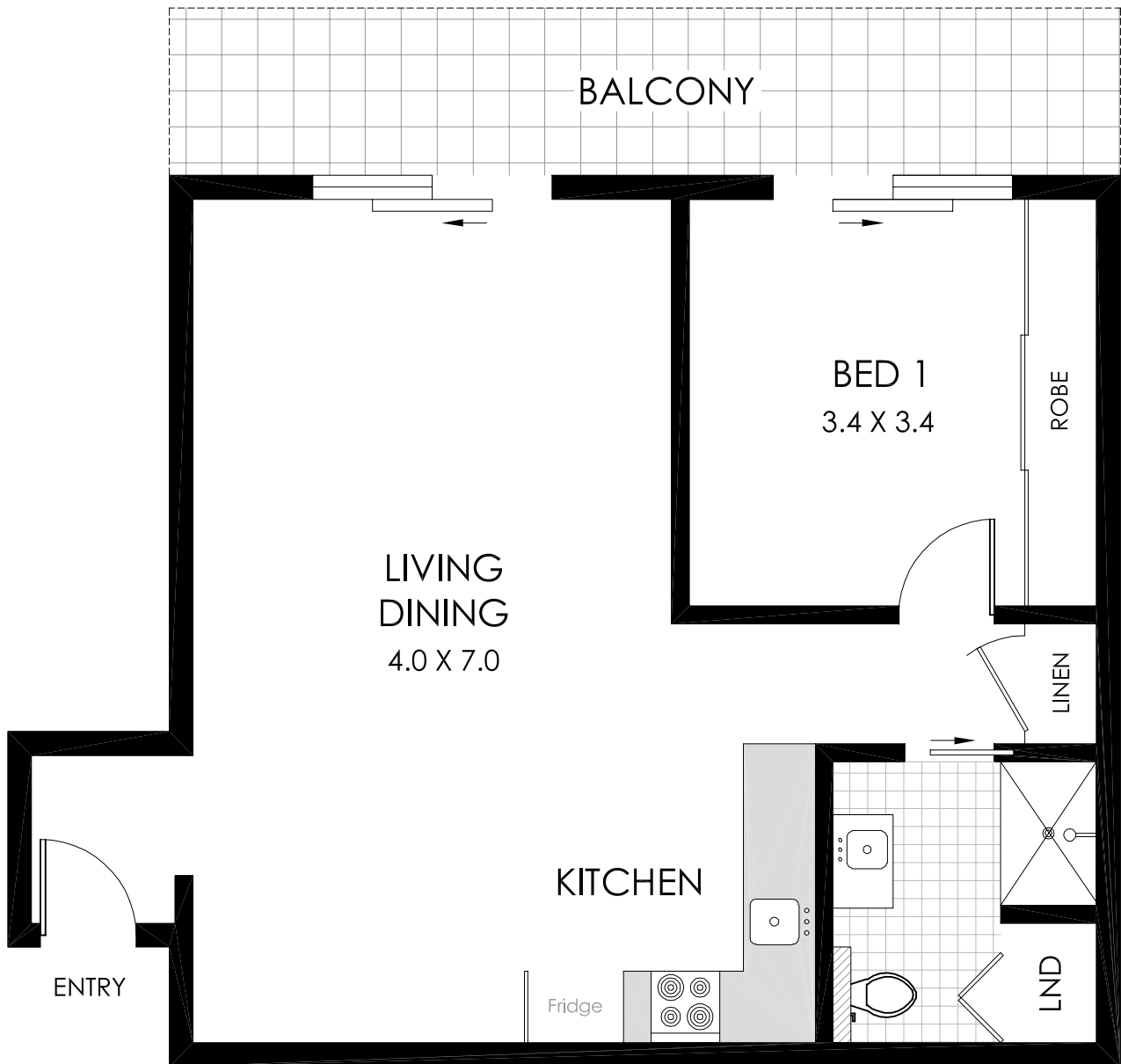
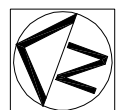


BresicWhitney



PLANS SHOWN ARE ONLY INDICATIVE OF LAYOUT. DIMENSIONS ARE APPROXIMATE

All information contained herein is gathered from sources we believe to be reliable, however we cannot guarantee its accuracy and interested persons should rely on their own enquiries. Dimensions are approximate.



10/107 VICTORIA STREET

Council Rates: \$796 pa

Water Rates: \$558 pa

Strata Levies: \$1337 pq

POTTS POINT

Internal: 54m²

Balcony: 11m²

Apartment Size: 65m²