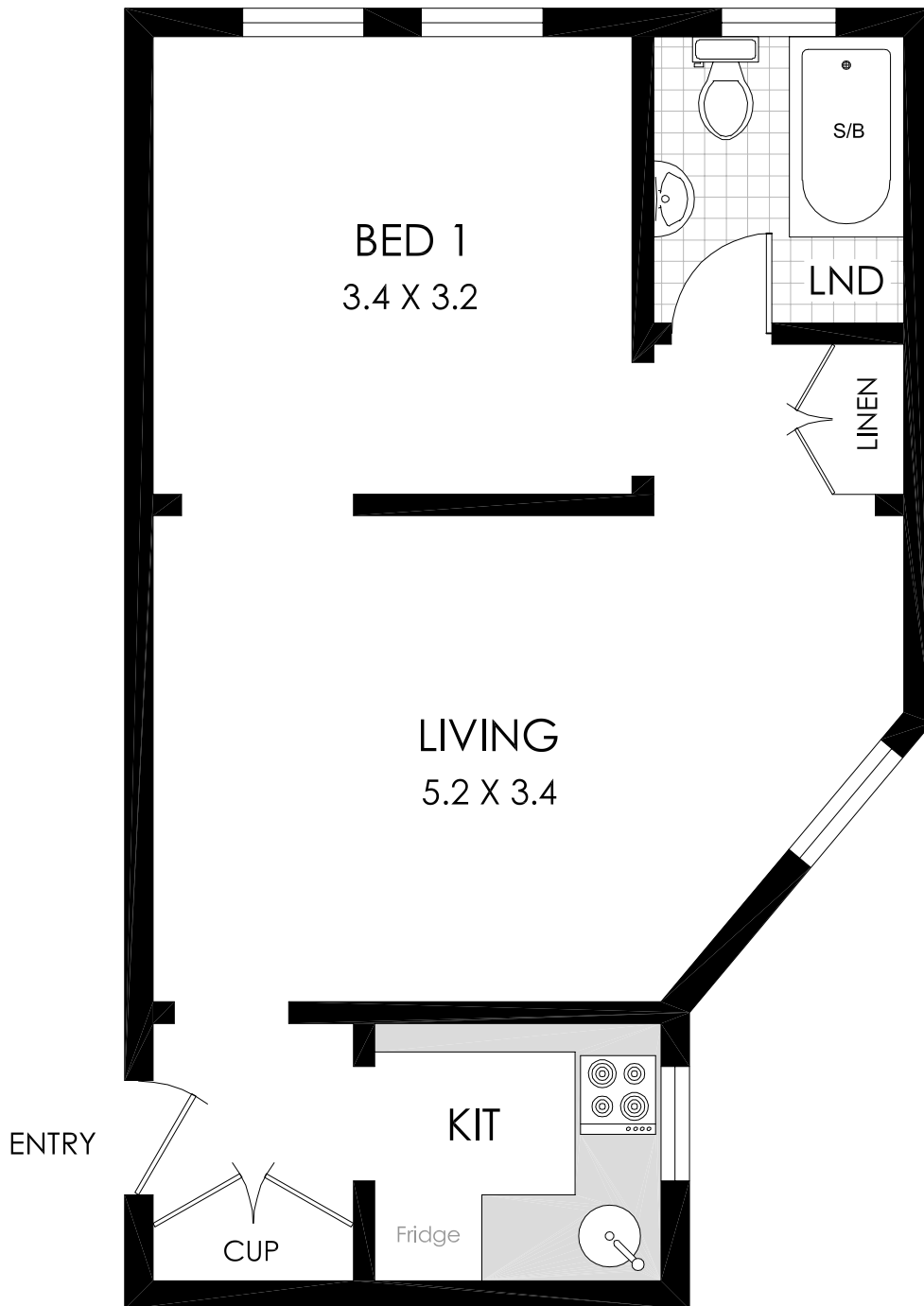


# BresicWhitney



PLANS SHOWN ARE ONLY INDICATIVE OF LAYOUT. DIMENSIONS ARE APPROXIMATE

All information contained herein is gathered from sources we believe to be reliable, however we cannot guarantee its accuracy and interested persons should rely on their own enquiries. Dimensions are approximate.



12/11 WYLDE STREET

Council Rates: \$796 pa

Levies: \$919 pq (Incl. Water Rates)

POTTS POINT

Apartment Size: 42m<sup>2</sup>